



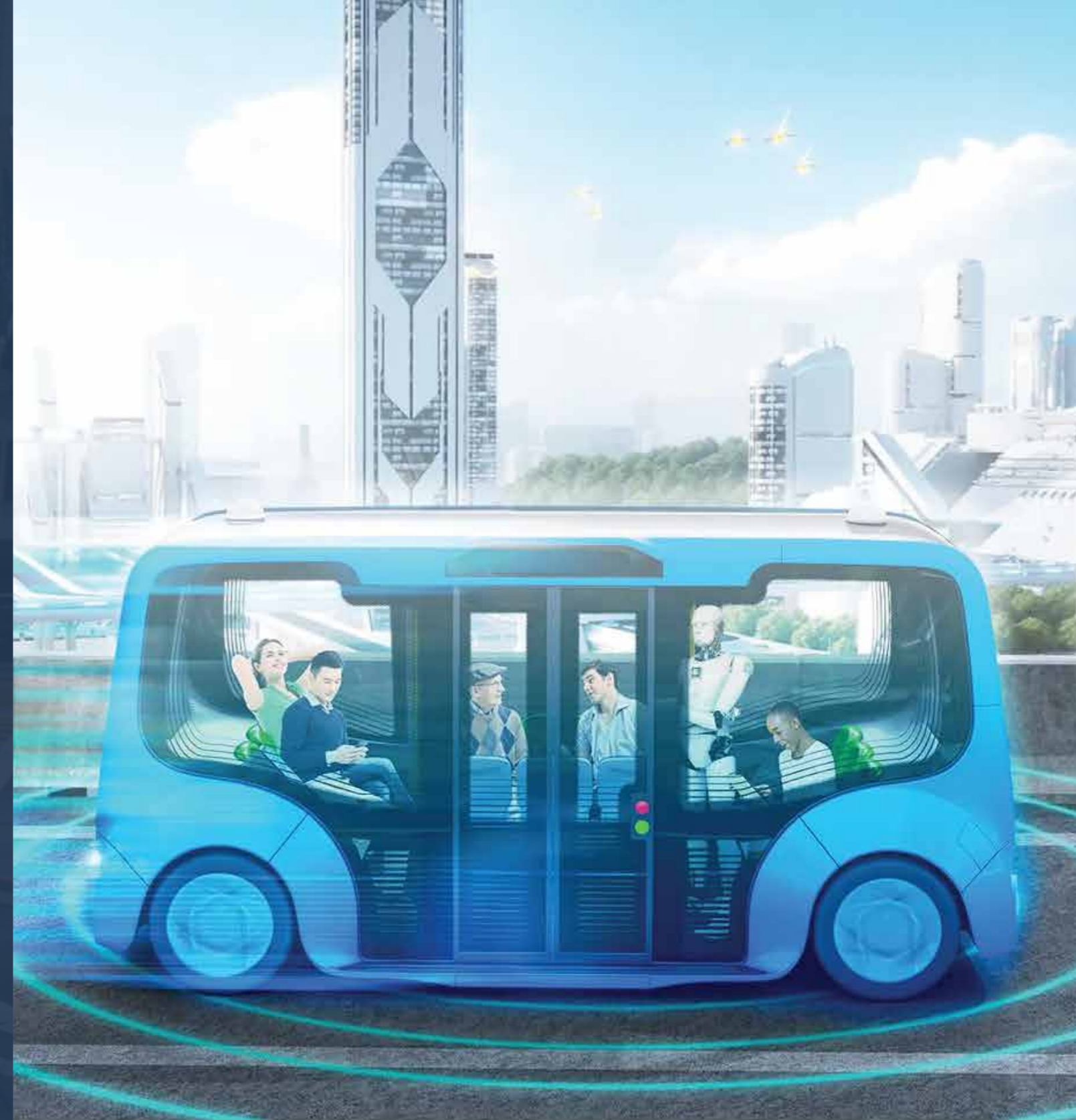
NOVUS
HI-TECH



**NOVUS
SHUTTLE**

**REDEFINING
AUTONOMOUS
MOBILITY**

WELCOME TO THE FUTURE OF **TRANSPORTATION**



INTRODUCTION:

Welcome to the future of transportation with the Novus Shuttle, a remarkable fusion of cutting-edge technology and innovation. Our autonomous vehicle represents a significant step forward in redefining how we travel, promising safer, more efficient, and sustainable mobility.



VEHICLE OVERVIEW:



At the heart of the Novus Shuttle is a platform-independent system, a pinnacle of modern engineering. What sets this vehicle apart is its advanced sensor suite, enabling it to perceive and understand its environment with unparalleled precision.

MAPPING AND LOCALIZATION:



Our vehicle features a powerful 3D LiDAR system with GPS, providing a comprehensive, three-dimensional view of the surroundings with high precision. This technology allows the vehicle to create detailed, real-time maps of its environment, ensuring safe and efficient navigation.

OBSTACLE DETECTION:



The vehicle's software (Novus Drive) processes data from multiple 3D/2D LiDARs and cameras in real-time. Advanced algorithms identify obstacles and assess their threat levels, continuously updating information as the vehicle moves.



PATH PLANNING:

Once obstacles are detected, the path planning system calculates a safe and efficient route for the vehicle, adjusting to changing environmental conditions and unexpected obstacles.



DRIVE-BY-WIRE (DBW):

Our Drive-By-Wire system ensures the vehicle's actions align with the decisions made by the obstacle detection and path planning systems. It rapidly engages brakes, steering, and acceleration to avoid collisions in emergencies.



ENHANCED SAFETY:

Safety is paramount. The Novus Shuttle features a 2D LiDAR system in front, providing an additional layer of security by detecting obstacles, pedestrians, and other vehicles, allowing for rapid decision-making and collision avoidance.



ADVANCED CAMERAS:

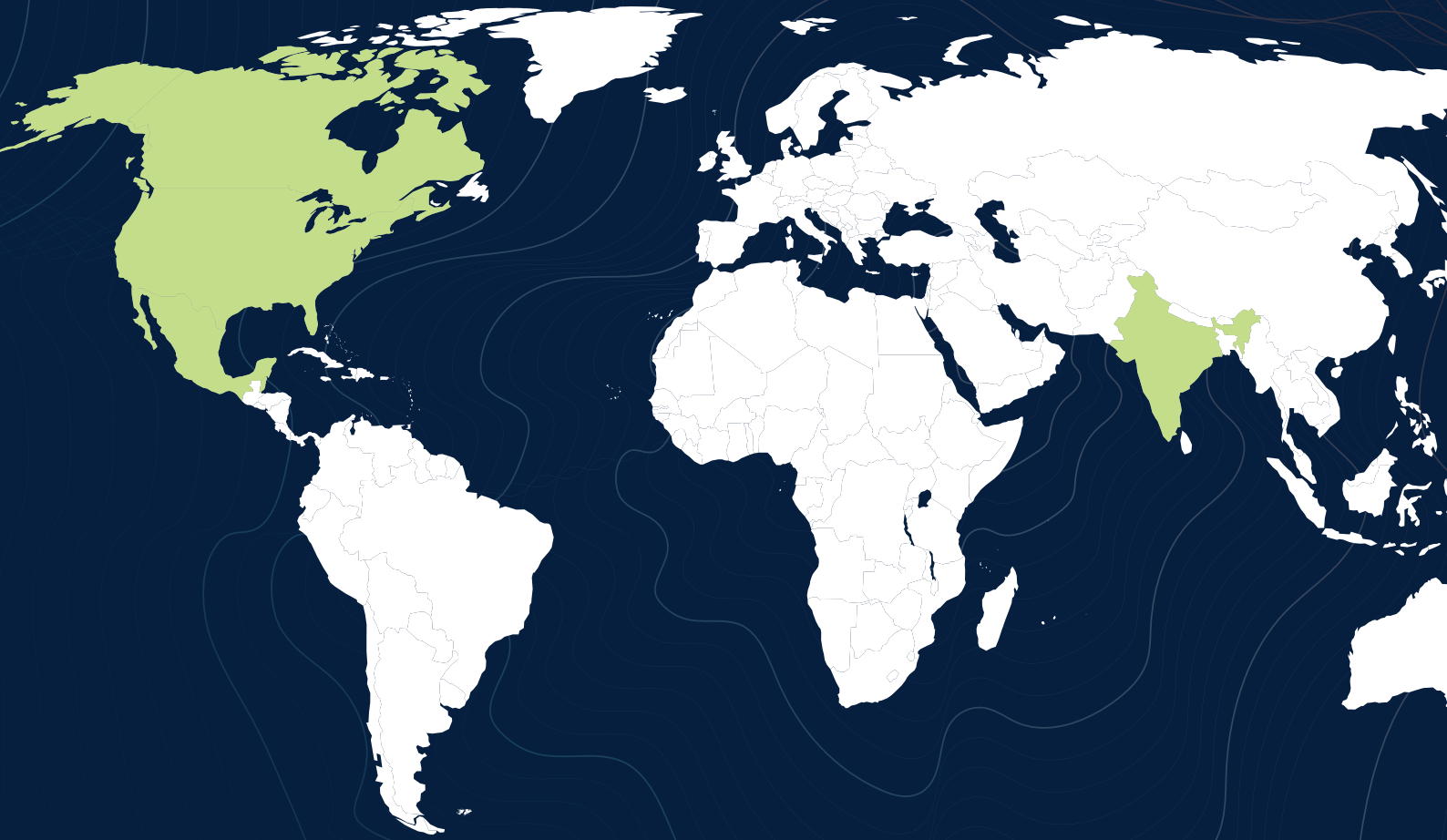
Our autonomous vehicle is equipped with side and front-facing cameras, providing a dynamic field of view and seamless adaptability to different driving scenarios, such as traversability mapping.



USHERING IN A NEW ERA:

In conclusion, our autonomous vehicle technology is not just about transportation; it's about transforming the way we interact with our environment and shaping a safer, more efficient, and sustainable future. With advancements in off-roading capabilities, desert navigation, highway travel, smart urban mobility, and a strong commitment to eco-friendly innovation, the possibilities are limitless.





CONTACT US

GLOBAL HEADQUARTERS

A-18 Infocity, Sector-34, Gurgaon
122001 (Haryana, India)
Tel:+91(124)4715300

Email: marketing@hitechroboticsystemz.com

www.novushitech.com